

THIRTY • NINE  
PRIVATE MEMBERS CLUB

# *Beauty Brochure*

2022 - 2023 FALL/WINTER



*Beauty is not frivolous  
it is a vital part of wellbeing.*







# CONTENT

- 04 CLUB THIRTY·NINE
- 06 OUR APPROACH
- 09 BIOLOGIQUE RECHERCHE
- 11 AUTEUR SKINCARE
- 13 FACIAL TREATMENTS
- 20 BODY TREATMENTS
- 24 BODY & FACE TREATMENTS
- 27 HAIR & MAKEUP
- 30 BARBER SHOP
- 32 NAILS SERVICES
- 35 CONTACT



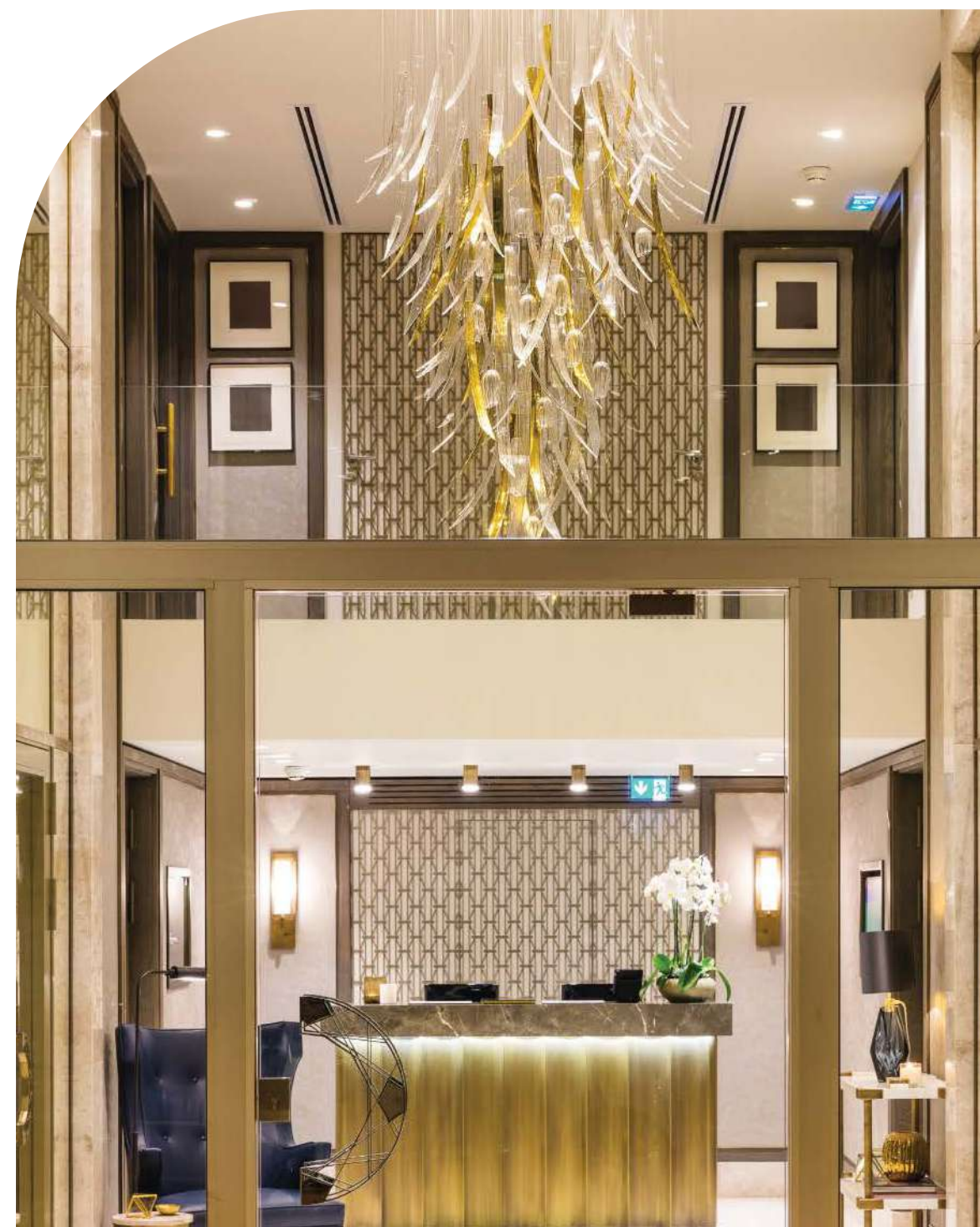


# *Club Thirty-Nine*





Located in the heart of Monte Carlo, **THIRTY·NINE**, the exclusive private members sports club on the Riviera, welcomes a community of inspired individuals to discover a beautifully orchestrated world of bespoke wellness, lifestyle and cultural experiences. Designed to stimulate and soothe the senses, **THIRTY·NINE** facilitates a healthy and balanced lifestyle. Throughout three floors of social and intimate spaces, the unashamedly luxurious furnishings perfectly reflect the elegance and heritage of the club's iconic location, 39 Avenue Princesse Grace, Monaco.



**THIRTY·NINE's** concept has been created to serve as so much more than simply a members' club. The vision is to provide a setting that offers an unparalleled fusion of luxury and wellness to a sophisticated, cosmopolitan society.



# *Our Approach*





# CONCEPT

The Studio concept is based on hyper personalized experiences.

The idea is quite simple: the more time you have to devote to your beauty experience the more our experts will create an efficient and complete tailor-made treatment by adding specific professional products and machines to optimize the result of the care treatment.

With this new approach, either you select a face or a body experience, all treatments are anti-aging for epidermics, adapted to men & women.





# HOW IT WORKS

Our experts will use cofactors which are professional treatments masks, as well as boosters being professional high concentrate products applied with specific anti-aging techniques acting like a real sport session for the face muscles as well as the remodeling face machine, using 3 electric powers which deeply work in the same time to plump, tone, regenerate, oxygenate and optimize the penetration of the active ingredients in the epidermis.

A complete diagnosis with the Skin Instant Lab machine will be made with the expert every 3 months to check the epidermis evolution and to readjust the treatment or the cure according to the skin evolution.

As of 2 hours of treatment, you have the option to combine face and body during the same session .

- 45 min experience (1 cofactor)
- 60min experience (1 booster or 1 super booster)
- 90min experience (1 booster + 1 super booster or 1 booster + 1 cofactor or 2 boosters)
- 120min experience (1 booster + 1 super booster + 1 cofactor or 2 boosters + 1 cofactor)





# Biologique Recherche







The Biologique Recherche legendary French cosmetics brand is exclusively available within Monaco at **THIRTY·NINE** Monte Carlo.

The methodology is based on over forty years of experience using innovative products and meticulous protocols.



The products are formulated with high concentrations of active ingredients derived from natural or biotechnological compounds and are fragrance-free.

Skincare is provided following a personal dermo-cosmetic diagnosis, suitable for both men and women, using a Skin Instant analysis for each individual.

\*Members receive a 5% discount on all products as well as special rates on all treatments.



# *Auteur* *High-active Skincare*







Auteur is the premium global anti-aging skincare treatment. It optimises skin's healthy functions and appearance by intelligently targeting the cellular foundations of healthy skin: regeneration, hydration, exfoliation, protection, and cellular vitalisation.



Thanks to the 30% high-active skincare compositions formulated with carefully balanced, high-concentrations of growth factors, peptides, minerals, phytoactives and antioxidants.

Auteur is using Retinol active ingredient to fight the skin aging process and solve skins issues, as well as skin quality.



# *Facial Treatments*





# SKIN DIAGNOSIS

Our methodology rests on the foundation of its various systems for analyzing, diagnosing and prescribing, so its products and skincare treatments are always in phase with your skin evolution.

## BIOLOGIQUE RECHERCHE SKIN LAB

This unique analysis is the first stage in the Biologique Recherche methodology, a tool which is used to identify your Skin Instant©.

### THE ASSESSMENT STAGE ANALYSIS OF YOUR SKIN'S SPECIFIC NEEDS

Before your \*treatment, the expert carries out a thorough dermo cosmetic diagnosis to pinpoint your exact Skin Instant©.

This diagnosis is carried out using the Skin Instant© Lab system and includes a visual analysis, a questionnaire, and the taking of measurements, to allow a treatment protocol to be devised that precisely matches your needs.

As the epidermis change all the time even during a day due to internal or external factors, we will recommend to do the complete analysis every 3 months to reajust your beauty routine

\*Skin analysis is offered for any treatment or BR product bought.







# FACIAL BOOSTERS

Our facials are designed to meet your specific needs, nurturing and rejuvenating your skin for a youthful and radiant complexion. According to the time that you have, the expert therapist will design a bespoke facial based in your 'skin needs'. More the treatment will be long more the expert will add specifics boosters, modulars or specific technology to optimize the results and to make a complete treatment.

## FRUITS ACID TREATMENT

This deep cleansing facial is designed to clean, purify and tighten the skin's pores with an end result for a cleaner, healthier, free of imperfections and rebalanced skin.

## VIPO2 TREATMENT

A regenerating and revitalising treatment for the epidermis that works on all Skin Instants®. This treatment is a moment of total well-being and relaxation which oxygenates the skin, smoothes the facial contours and immediately gives a radiant complexion.

## MC110 TREATMENT

A treatment for reducing wrinkles and lines designed for lackluster Skin Instants®. It leaves the skin on your face, neck and chest toned and redefined.

## RESTRUCTURING & SMOOTHING TREATMENT

An immediate reconditioning and lifting treatment for thin, sensitive and reactive skin with instant results. Your skin is hydrated, smoothed and toned.

## SOIN MASQUE EXFOLIANT P50 VISAGE

An exfoliating and regenerating treatment for keratinized Skin Instants® and skin with an irregular microprofile. Leaves skin even, smooth and radiant.

## LIFT CVS TREATMENT

An exfoliating and lifting treatment combined with shaping techniques designed for mature Skin Instants®. It leaves the skin on your face, neck and chest smooth, refined and toned.

## SECOND SKIN TREATMENT

A world first in professional beauty products, this regenerating and lifting treatment is created using an electrospun mask with 80% pharmaceutical-grade hyaluronic acid and is designed for mature Skin Instants® damaged by signs of aging.

## TOLESKIN TREATMENT

A treatment that reduces skin sensitivity, itching sensations and discomfort. Its helps to restore the microbiota balance to prevent skin from reacting and preserve its integrity.

## SKIN CLEANSING

This express cleansing facial is designed to clean, purify and tighten the skin's pores with an end result for a cleaner, healthier, free of imperfections and rebalanced skin.





# FACIAL SUPER BOOSTERS

## BIOLOGIQUE RECHERCHE REMODELING FACE

An advanced bioelectric treatment that combines the power of three currents (galvanic, medium and high frequency) for immediate and long-lasting results. Also available as a targeted 1-hr treatment.

## BIOLOGIQUE RECHERCHE ELECTROPORATION

To strengthen the epidermis. The Remodeling Face® module with electroporation – a high-frequency pulse current – makes the surface layer of the epidermis more permeable, thereby enhancing the bioavailability of the serum with its high dose of active ingredients.

## BIOLOGIQUE RECHERCHE MENTONNIÈRE

To remodel the face and jawline. The chin straps help remodel face and jawline through their action on the facial contours and neck. Gives an immediate and lasting lifting effect.

## BIOLOGIQUE RECHERCHE MICRO-PUNCTURE LAB

The technique is nearly painless and is based on micro-stimulations to remodel the deeper dermal layer for increased regeneration, resurfacing and firmness. The obtained effects are the stimulation of intra-dermal collagen production and increase penetration of Cocktail d'Actifs Regenerants vitamins and growth factor serum.

## AUTEUR: GLOBAL ANTI-AGE TREATMENT

We will combine those high-active ingredients with L.E.D light (luminotherapy), Vapozone for comedons extractions and micro-currents for an ultimate result.

## BIOLOGIQUE RECHERCHE SOIN HAUTE COUTURE

The Biologique Recherche Haute Couture Program. Created to ensure individual skin complexions are met with the right products and unique treatments created just for you. Skin experts develop customised products at the exclusive Biologique Recherche laboratory for each new line. The unique and highly concentrated formulas combine the brands clinical approach to cosmetic treatment with personalised support to deliver extraordinary results. This program is based on three fundamental steps that are repeated over the months: The cosmetological evaluation of the skin, The creation of tailor-made products and the personalized care. Cures of 1, 3 or 6 months only by appointment





# FACIAL CO-FACTORS

For even more visible results, you can enhance your treatment by applying a preformed mask which adapts to the shape of your face to create a specific and intensive treatment, such as:

## BIOLOGIQUE FEERIE

Collagen Mask

• FIRMING • THIGHTENING THE PORES • SOOTHING

## BIOVECTEUR MARIN

Seaweed energizing mask

• REVITALIZED • BRIGHTENING • DETOXIFYING

## PLATYSMA

Anti-ptosis chin mask

• FIRMING • ANTI PTOSIS

## LIFT KISS

Contour and Volume Lips Patch

• LIFTING • SMOOTHING • PLUMPING • REGENERATING

## PATCHS DEFATIGANTS

Anti-fatigue and smoothing biocellulose eye contour mask

• ANTI DARK CIRCLES • ANTI WRINKLE • ANTI DEHYDRATION LINES

## MASK TOLESKIN

Anti-crisis soothing and lipid-replenishing mask and sterile serum

• ANTI REDNESS • SOOTHING • LIPID-REPLENISHING

## MASK PIGM 400

Brightening and radiance boosting face mask

• ANTI DARK SPOTS • PERFECTING • BRIGHTENING





# FACIAL PRICELIST

## DIAGNOSIS

30 MIN

Skin Instant© Lab: 30 minutes is offered to non-members clients in treatment or buying BR products.

Non-Members	Members
55 €	FREE

## BIOLOGIQUE RECHERCHE FACIALS\*

45 MIN (1 cofactor)

60 MIN (1 booster)

90 MIN (1 booster + 1 super booster or 1 booster + 1 cofactor or 2 boosters)

120 MIN (1 booster + 1 super booster + 1 cofactor or 2 boosters + 1 cofactor)

\*Enjoy a preferential rate on your blowdry

Non-Members	Members
140 €	110 €
220 €	185 €
270 €	240 €
360 €	330 €

## PACKAGES: FACIALS

60 MIN (5, 10 or 15)

90 MIN (5, 10 or 15)

Non-Members	Members
Starting at 1000 €	825 €
Starting at 1275 €	1100 €

## BIOLOGIQUE RECHERCHE SUPER BOOSTERS MACHINES

60 MIN (Remodeling Face®)

60 MIN (Mentonnière, Electroporation or Micro-Puncture)

Non-Members	Members
230 €	195 €
275 €	220 €





# FACIAL PRICELIST

## BIOLOGIQUE RECHERCHE SECOND SKIN TREATMENT

	Non-Members	Members
60 MIN	360 €	340 €
90 MIN (Second Skin Treatment + Super Booster)	420 €	395 €

## BIOLOGIQUE RECHERCHE SOIN HAUTE COUTURE

By appointment only

## AUTEUR: GLOBAL ANTI-AGE TREATMENT

	Non-Members	Members
60 MIN	360 €	340 €
90 MIN	420 €	395 €





# *Body Treatments*

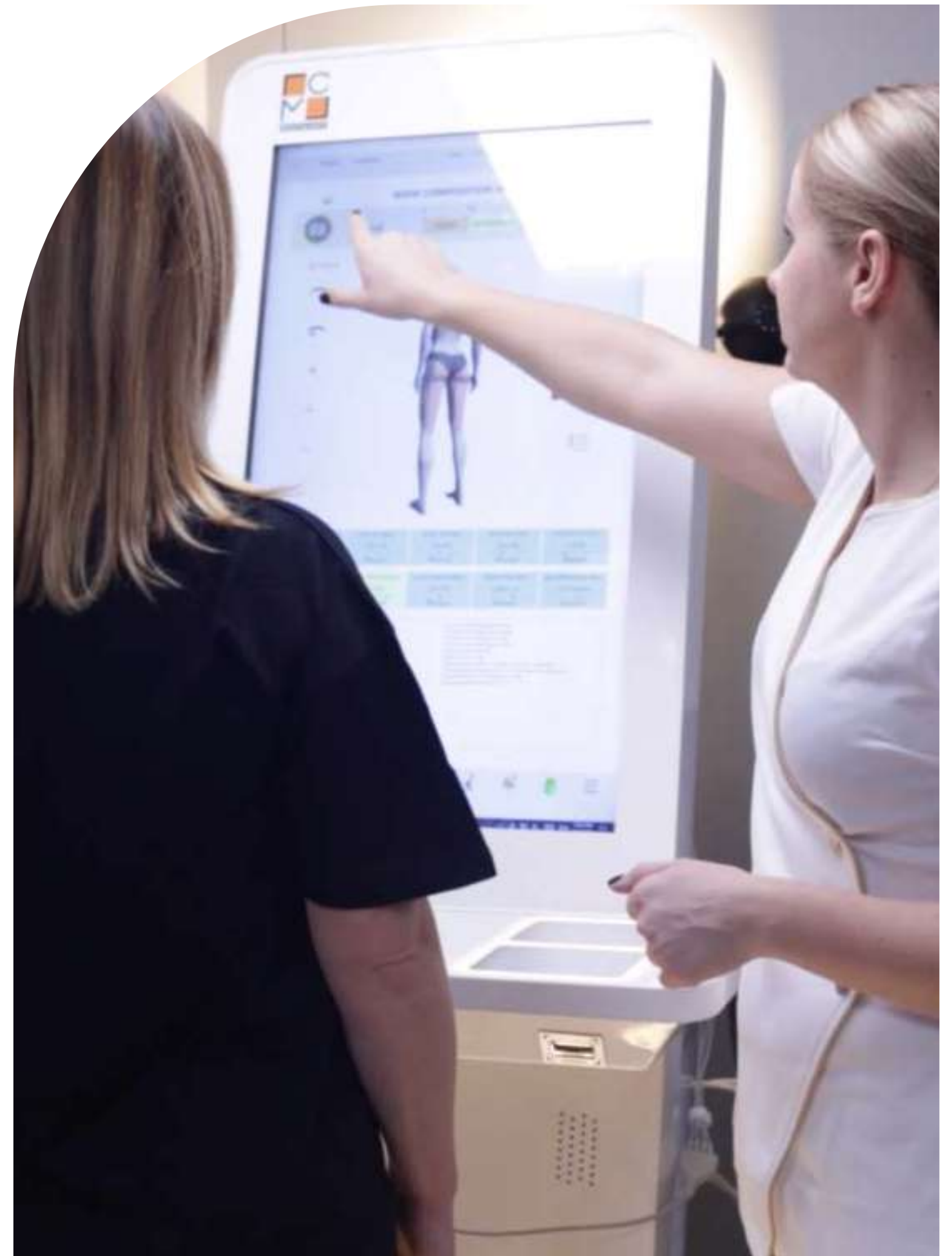


# BODY DIAGNOSIS

## MULTISCAN PRO MACHINE

Multiscan Pro is a health screen physiological analyzer, a combination of medical applications for obtaining an overview of the most important regulatory mechanisms of the human body.

It provides valuable information about the organism, with indications of your functional health status. These indicators form a stable reference for monitoring and assessing the evolution of a particular therapy. The results and information provided are highly reliable.







# BODY TREATMENTS

## P50 EXFOLIATION BODY TREATMENT

An exfoliating and revitalizing treatment. It leaves your skin softer, smoother and hydrated. Cream is applied in specialised movements.

## HEAVY LEGS TREATMENT

A treatment with a draining and decongesting action. It stimulates circulation and helps legs to feel lighter. Lotion P50 is applied for lymph drainage management.

## BODY LIFT TREATMENT

A hydrating and dermo-protective bio-reflex massage. It is ideal after a weight management program to firm and tone loose tissue, eliminate dead skin cells and sculpt your body.

## ALGAE SLIMMING TREATMENT

A purifying and detoxifying treatment. It promotes the elimination of toxins and helps improve microcirculation.

## SLIMMING BOOSTER TREATMENT

To refine your bodily contours. A draining treatment that refines your bodily contours and reduces cellulite.

## BESPOKE MASSAGE

This treatment includes a full body massage to firm and tone tissue, as well as a gel wrap application, a cold shower and a firming body cream application.

## THAI MASSAGE

Thai massage uses gentle pressure and stretching techniques to relax the whole body. This is an ancient healing practice that originated in India.

## FOOT REFLEXOLOGY

A therapeutic practice using massage. The manipulation of reflex points in the feet - which connect to all the nerve endings - leaves you with a sense of inner wellbeing.

## RAINDROP ESSENTIAL OILS TREATMENT

Raindrop Therapy combines aromatherapy, reflexology, and more to create a healing and cleansing massage.

## MANUAL LYMPH DRAINAGE

Lymph drainage is a special type of medical massage. The transport of the lymphatic fluid in the lymph vessels is stimulated by gentle manipulation techniques.

## HOT STONE MASSAGE

A massage that involves the use and placement of basalt river rock on different points of the body. The rocks are heated before use and the massage therapist can then apply deeper pressure to areas of concern without causing any discomfort.

## STEAM ROOM TRADITIONAL TREATMENT

A special treatment including steam room, a black soap scrub and 30 minutes massage.



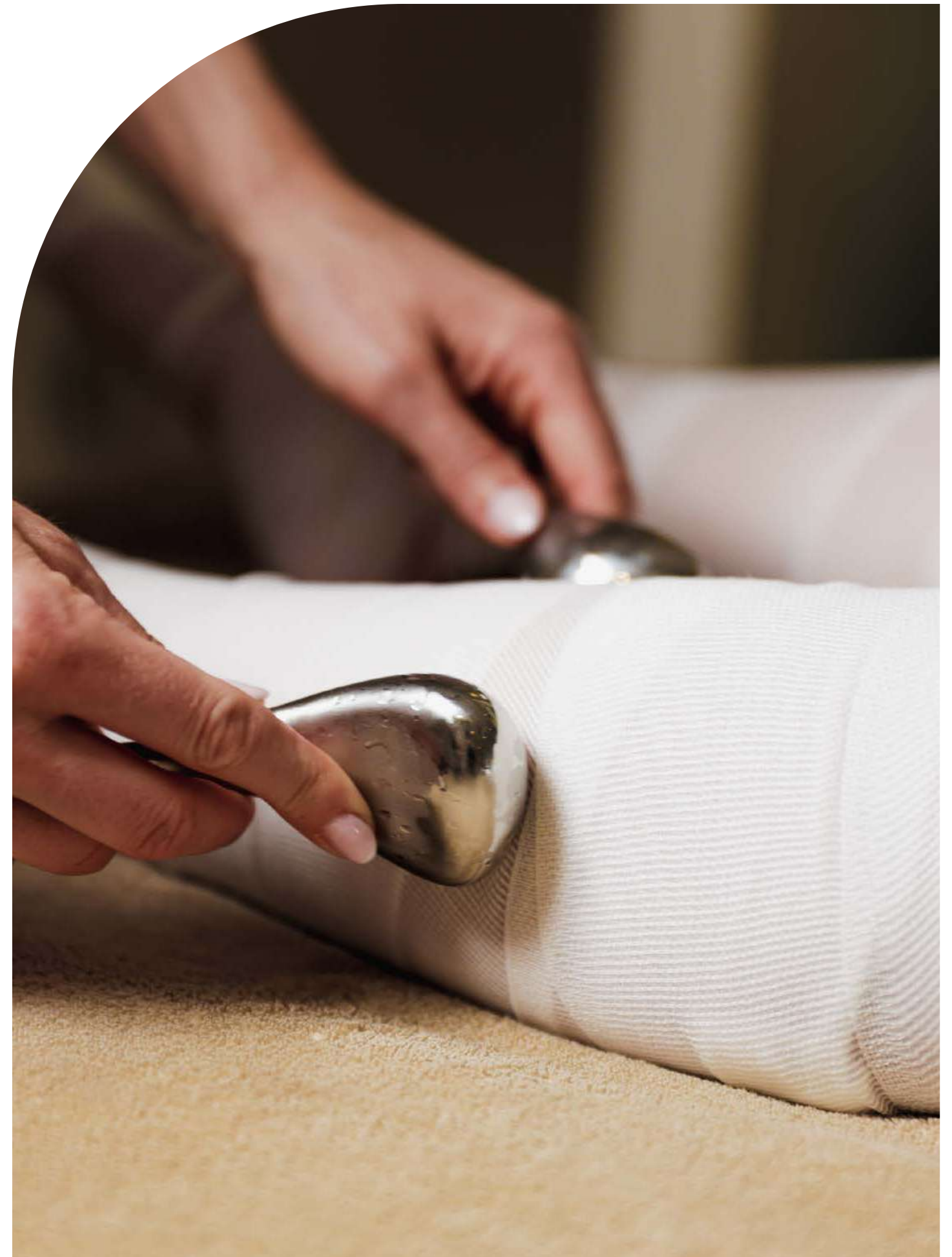
# BODY TREATMENTS PRICELIST

	Non-Members	Members
45 MIN	140 €	110 €
60 MIN	220 €	185 €
90 MIN	275 €	240 €
120 MIN	360 €	330 €

STEAM ROOM TRADITIONAL TREATMENT	Non-Members	Members
	220 €	185 €

PACKAGES	Non-Members	Members
60 MIN (5, 10 or 15)	Starting at 1000 €	825 €
90 MIN (5, 10 or 15)	Starting at 1275 €	1100 €

\*Body analysis is offered with a package treatments.





# *Body & Face Treatments*





# BODY & FACE TREATMENTS

## 45' SPECIAL JETLAG

This recovery treatment will stimulate your circulation with a draining and decongestionant action. It makes you feel lighter and refreshed after a long trip or after an intense sport session (this treatment can be customized according your needs: Face drainage or legs drainage).

## 60' CLUB 39 RELAXATION

The therapist will start by a back massage follow by a personalised Biologique recherche customized mask and L.E.D light therapy. The fact that the treatment will start by the back, it will prepare the muscles face, activate the microcirculation and release all the tensions to optimize the facial result. During the L.E.D light therapy, the therapist will massage the body extremity: fooms and hands for an intense relaxation.

## 90' CLUB 39 RECOVERY

During this treatment, the therapist will do a bespoke massage using different technicals movements according the body zones and the needs. From head to toes, your body will be intensely relax and treat. A biologique recherche customized mask will be done follow by the L.E.D light therapy. Body and face will be regenerate, hydrate, glow and relax

## 120' CLUB 39 ANTIAGING

During this treatment, the therapist will do a bespoke massage using different technicals movements according the body zones and the needs. 1h bespoke massage follow by 1h biologique recherche customized facial (1 booster) will be done follow by the L.E.D light therapy. Body and face will be lift, plump, regenerate, hydrate, glow and relax.

## 120' EXTREME LIFTING

The body Lift booster and the Lift CVS for face during the same treatment. From head to foot, your epidermis will be Lift, renew and intensely plump and hydrate. This treatment will reenergize you and your epidermis will look like a baby skin





# BODY & FACE TREATMENTS PRICELIST

	Non-Members	Members
45 MIN	195 €	165 €
60 MIN	275 €	240 €
90 MIN	340 €	305 €
120 MIN	445 €	410 €

\*Body and face analysis are offered with a package treatments.







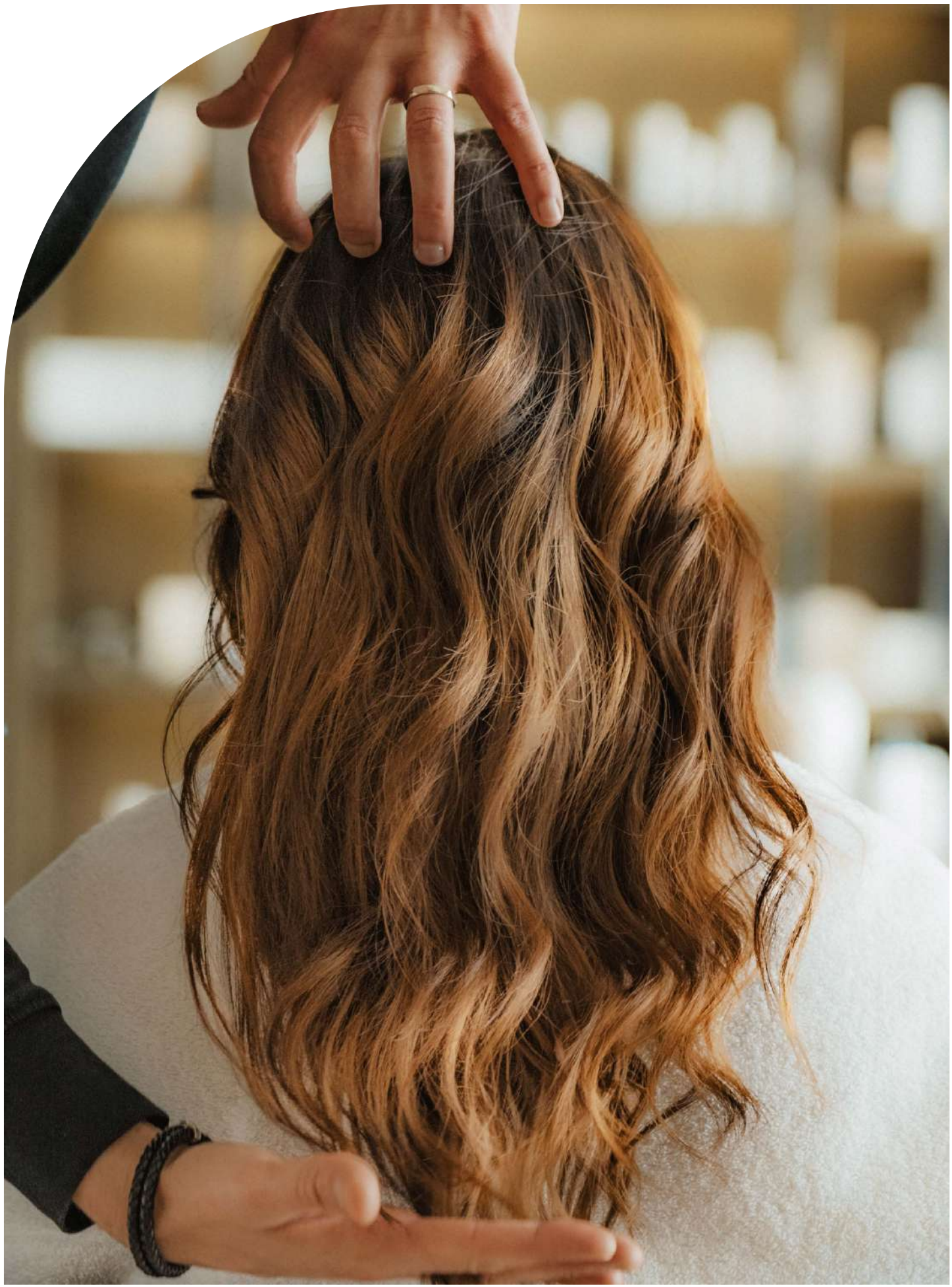
# *Hair & Makeup*



////////////////////

# HAIRSTYLING WOMEN & KIDS

BLOW DRY	Non-Members	Members
Blow Dry: Short Hair	50 €	45 €
Blow Dry: Medium Hair	70 €	60 €
Blow Dry: Long Hair	90 €	75 €
Blow Dry on Hair Extension	120 €	100 €
CUT	Non-Members	Members
Women's Cut	60 €	55 €
Women's Trim (fringe & ends)	55 €	45 €
COLOUR	Non-Members	Members
Roots	from 120 €	from 95 €
Full Head Colour	from 155 €	from 140 €
Toner	from 70 €	from 55 €
HIGHLIGHTS	Non-Members	Members
Top Section + Toner	from 240 €	from 210 €
Full Head + Toner	from 385 €	from 320 €
FOR GIRLS	Non-Members	Members
Teen's Blowdry: Short Hair (10-15 y/o)	40 €	30 €
Teen's Blowdry Medium Hair (10-15 y/o)	60 €	45 €
Teen's Blowdry : Long Hair (10-15 y/o)	80 €	60 €
Girls Cut (-10 y/o)	40 €	35 €
Teen's Cut (10-15 y/o)	55 €	50 €
Teen's Trim (10-15 y/o)	40 €	35 €







# HAIR TREATMENTS

	Non-Members	Members
Booster Oribe	55 €	45 €
Package with 5 Booster Oribe	190 €	135 €
Cryotherapy	175 €	160 €
Scalp & Hair Treatment BR*	55 €	30 €

\*Biologique Recherche

# SERVICES ON DEMAND

LASHES & BROWS

MAKEUP

BRIDAL PACKAGE

Information available upon consultation





# *Barber Shop*







# BARBER SHOP & KIDS

FOR MEN	Non-Members	Members
Moustache Trim	25 €	20 €
Contour Hair + Beard Trim	30 €	25 €
Wash & Style	35 €	30 €
Beard or Hair Trim	40 €	35 €
Traditional Beard Shaving	55 €	50 €
Men's Cut	55 €	50 €
Regular Colour	55 €	50 €
Hair Cut + Beard Trim	90 €	80 €
Men's Facial	55 €	35 €

FOR BOYS	Non-Members	Members
Children's Cut (-10 y/o)	40 €	35 €
Teen's Cut (10 - 15 y/o)	50 €	45 €





# *Nails Services*



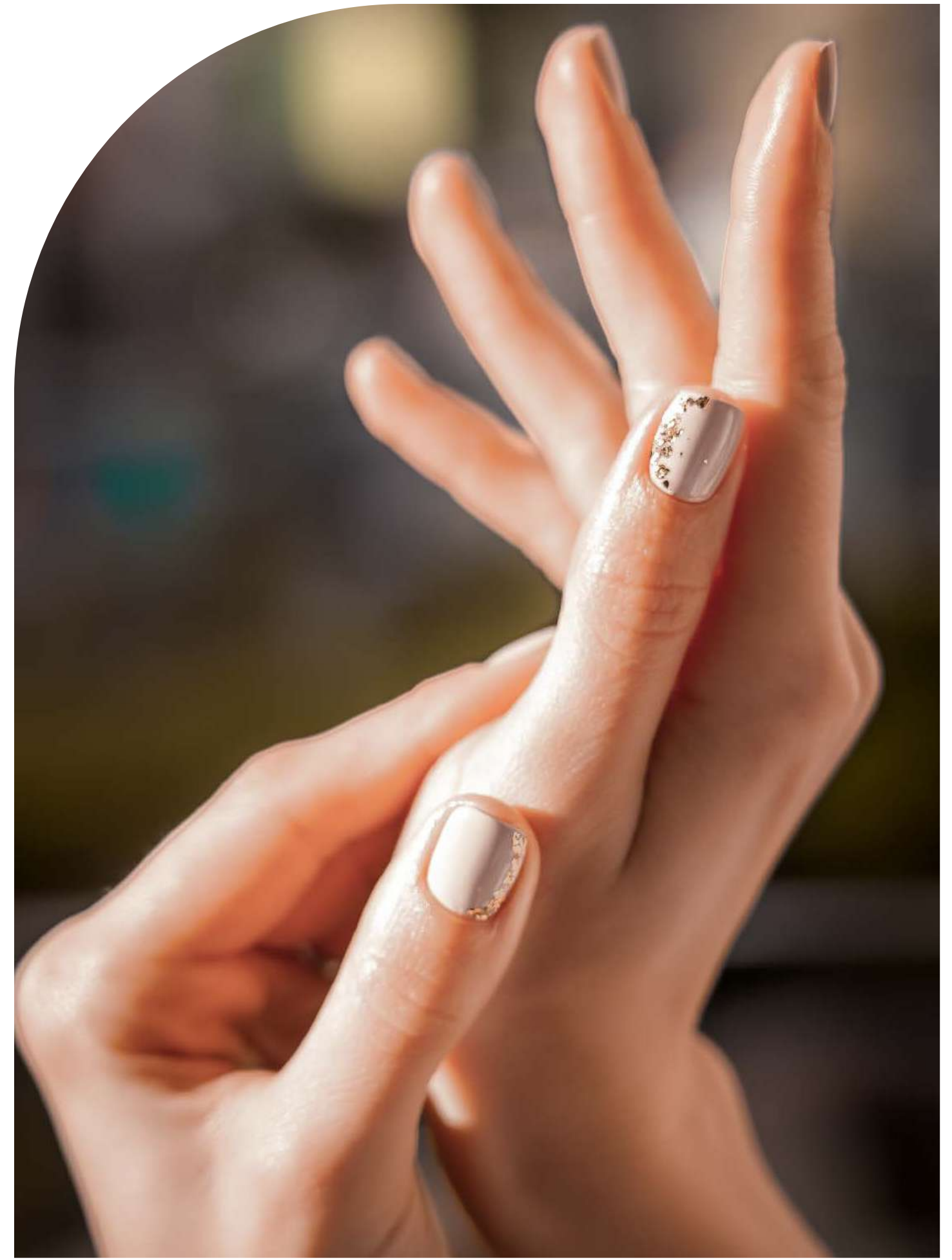


# MANICURE

	Non-Members	Members
Manicure (Russian Style) 1h	85 €	80 €
Manicure + Classic Nail Polish 1h30	95 €	90 €
Manicure + Semi Permanent 1h30	125 €	120 €
Semi Color Change 1h	105 €	100 €
Manicure + Extension Gel: Measure L 3h	225 €	220 €
Measure M 2h	185 €	180 €
Measure S 2h	185 €	180 €
Manicure + Gel filling: Long 3h	185 €	180 €
Medium 2h	155 €	150 €
Small 2h	155 €	150 €

## ADDITIONAL ADD-ON SERVICES

Semi Permanent or Gel Removal 20 min	20 €	15 €
Nails Reparation 20 min	15 €	10 €
Natural Baby Boomer 15 min	25 €	20 €
Color Baby Boomer 20 min	35 €	30 €
Strass/Glitter 5 min	15 €	10 €
French 15 min	20 €	15 €
Nail Art (One Nail) 15 min	30 €	20 €
Anti-Aging Scrub (BR) 10 min	20 €	15 €
Hand Reflexology	35 €	25 €





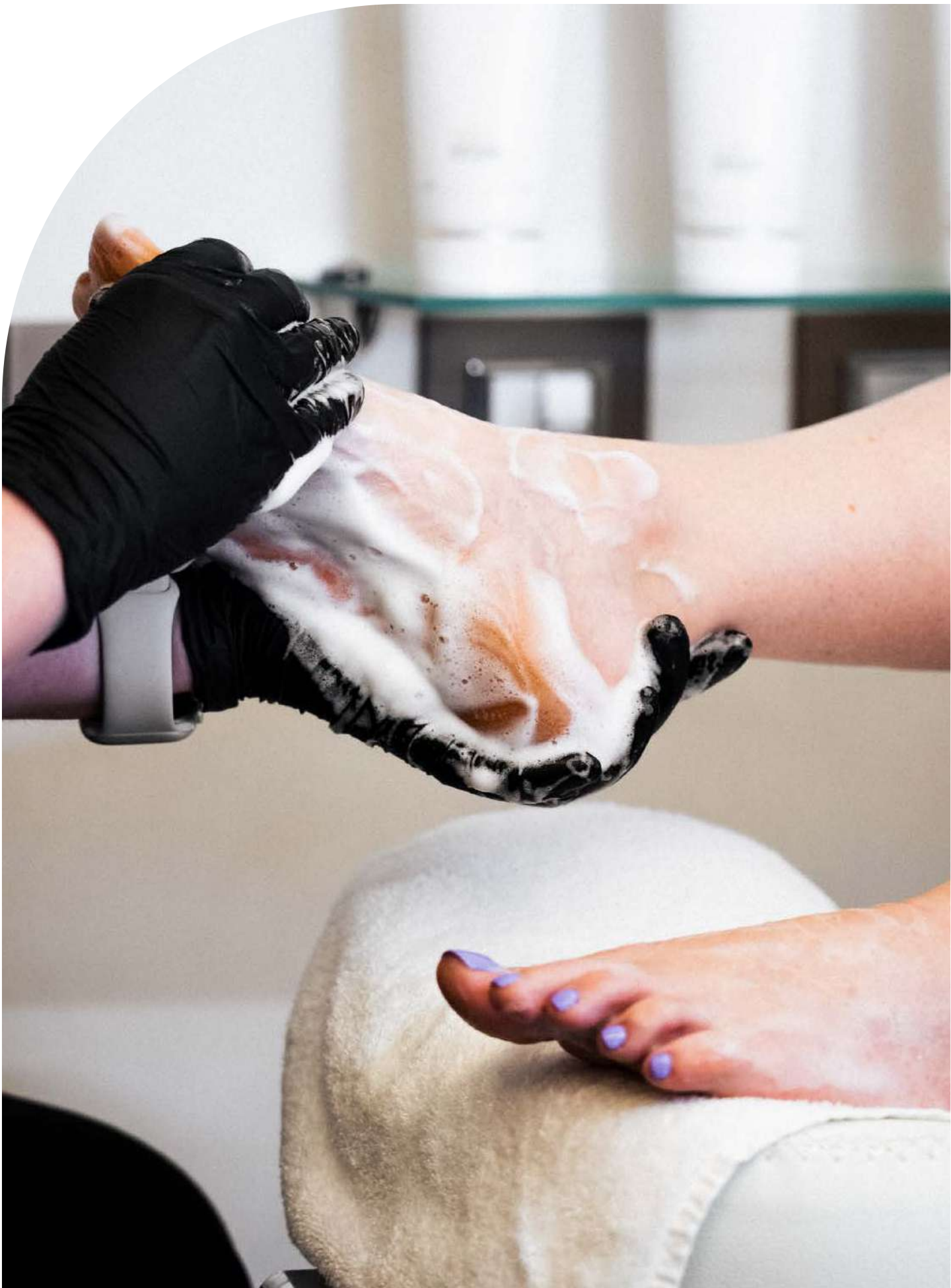


# PEDICURE

	Non-Members	Members
Simple Pedicure 1h	110 €	100 €
Pedicure + Classic Nail Polish 1h30	115 €	100 €
Pedicure + Semi Permanent 1h30	135 €	130 €
Semi Color Change 1h	90 €	85 €

# ADDITIONAL ADD-ON SERVICES

Semi Permanent or Gel Removal 20 min	20 €	15 €
Nails Reparation 20 min	15 €	10 €
Natural Baby Boomer 15 min	25 €	20 €
Color Baby Boomer 20 min	35 €	30 €
Strass/Brillant/Paillette 5 min	15 €	10 €
French 15 min	20 €	15 €
Nail Art (One Nail) 15 min	30 €	20 €







# *Beauty Contact*



[studio39@39montecarlo.com](mailto:studio39@39montecarlo.com)

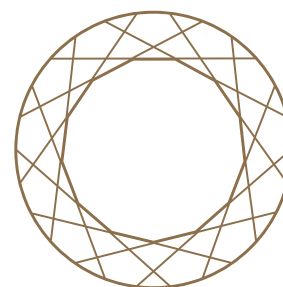
+377 93 25 39 39

[www.39montecarlo.com](http://www.39montecarlo.com)

**39 BEAUTY IS OPEN TO NON-MEMBERS**

**Opening Hours: Monday to Saturday  
09:00 - 19:00**





**T H I R T Y • N I N E**  
P R I V A T E M E M B E R S C L U B

**OPENING HOURS**

**Monday to Friday**

**07:00 - 22:00**

**Weekends & Public Holidays**

**09:00 - 19:00**

